

第31回NBF岩手トリオフェスティバル20250427



Oil Pattern Distance:	46 Feet	Reverse Brush Drop:	40 Feet	Oil Per Board:	50 uL
Forward Oil Total:	16.35 mL	Reverse Oil Total:	16.05 mL	Volume Oil Total:	32.4 mL
Forward Boards Crossed:	327 Boards	Reverse Boards Crossed:	321 Boards	Total Boards Crossed:	648 Boards

	Start	Stop	Loads	Speed	Crossed	Start	End	Feet	T.Oil
1	2L	2R	1	14	37	0.0	0.0	0.0	1850
2	5L	5R	1	14	31	0.0	1.9	1.9	1550
3	6L	6R	2	14	58	1.9	5.8	3.9	2900
4	7L	7R	2	14	54	5.8	9.7	3.9	2700
5	8L	8R	3	14	75	9.7	15.6	5.9	3750
6	11L	11R	2	14	38	15.6	19.5	3.9	1900
7	12L	12R	2	18	34	19.5	24.6	5.1	1700
8	2L	2R	0	22	0	24.6	38.0	13.4	0
9	2L	2R	0	30	0	38.0	46.0	8.0	0

Navigation: Forward Reverse More

	Start	Stop	Loads	Speed	Crossed	Start	End	Feet	T.Oil
1	2L	2R	0	30	0	46.0	38.0	-8.0	0
2	13L	13R	4	18	60	38.0	27.8	-10.2	3000
3	11L	11R	4	18	76	27.8	17.6	-10.2	3800
4	9L	9R	4	14	92	17.6	9.7	-7.9	4600
5	7L	7R	1	14	27	9.7	7.8	-1.9	1350
6	5L	5R	1	14	31	7.8	5.9	-1.9	1550
7	3L	3R	1	10	35	5.9	4.5	-1.4	1750
8	2L	2R	0	10	0	4.5	0.0	-4.5	0

Navigation: Forward Reverse More

Conditioner:
Type In or Select One

TransferType:
Type In or Select One

Forward



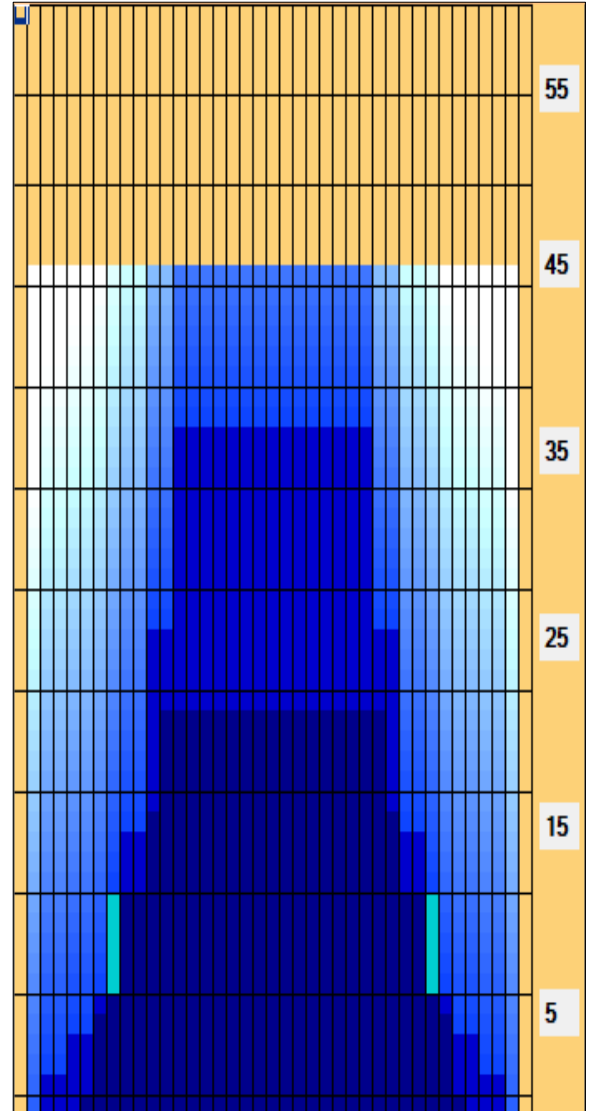
Reverse



Combined



Buff



Item	3L-7L:18L-18R	8L-12L:18L-18R	13L-17L:18L-18R	18L-18R:17R-13R	18L-18R:12R-8R	18L-18R:7R-3R
Description	Outside Track:Middle	Middle Track:Middle	Inside Track:Middle	Middle: Inside Track	Middle:Middle Track	Middle:Outside Track
Track Zone Ratio	6.09	1.56	1	1	1.56	6.09

